



# PRECISION MECHANICS

since 1969



QUALITY  
IS OUR  
FOCUS





# OVER 50 YEARS OF KNOW-HOW

Precision

Quality

Reliability

Innovation



# TEAM



**We are a team of 25 people  
who are competitive in work organization  
as well as in production.**

We are a cohesive team that consider people at the centre, through **concrete and constant improvement actions**. Our know-how, the result of experience and generational encounters, allows us to stand out for competence, quality and precision.



# FOCUS ON TRAINING AND INNOVATION



OMT is a company focused on innovation, in constant search of excellence. Our business strategy is oriented on progress and elimination of every form of waste, according to *Kaizen* and *Lean Production* methods.



Through a **continues training activity**, we work every day to anticipate change and the needs of a market constantly evolving.

Seek perfection

Establish pull



Identify value

Map the value stream

Create flow

CONTINUOUS  
GROWTH



# A STRATEGIC INDUSTRIAL PARTNER



OMT has equipped itself with a **modern and diversified fleet of machines**, to meet the needs of its customers. Thirty machines constantly updated in order to ensure high performance both from a qualitative and quantitative point of view. From the simplest to the most complex product, the machine park allows us to produce any type of mechanical part, satisfying every request.

We constantly work in **two shifts**, with possibility to increase a third shift, in case of increased market needs.



## Production Batch

- Batch **500/1.000 pcs** – annual quantity 5/10.000 pcs
- Batch **10/20.000 pcs** – annual quantity 40/80.000 pcs
- Batch **100.000 pcs** – annual quantity 1.000.000 pcs

## Working range

**Turning:** up to 80 mm

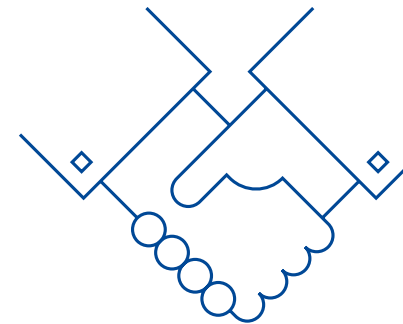
**Shooting:** up 365 mm

**CNC machining centres:** Y450 X700 Z350 mm

# WHY CHOOSE US



- 1 **Machining a wide range of materials**
- 2 **Specialized Technical Department**
- 3 **Machine park, softwares  
and quality check constantly updated**
- 4 **Machining works completed of surface treatments**
- 5 **100% selection, assembly and organized logistic**



# THE PROCESS



Through a systematic process we match each batch of raw material to specifications orders, ensuring their **long traceability** across the entire supply chain.

Tool warehouse management, supported by an **automatic drawer** unit for access tracking, assures us constant availability and a optimized production.

Our strategy includes planning, monitoring activities trough a park machines interconnected with **MES system**, processes controlled by stations located in production with **SPC system** and collaboration with qualified external suppliers.



# SECTORS



OMT produces a **wide range of mechanical parts**, suitable for **various industrial sectors**.



Methane/LPG systems



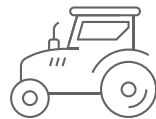
Pneumatics



Hydraulics



Automotive



Agricultural machinery

## HYDRAULIC PUMPS



## AUTOMOTIVE



## HYDRAULICS



## SOLENOID VALVES



# SECTORS



**METHANE / LPG SYSTEMS**



**GEARS**



**PNEUMATICS**



**LOCKS**



**AGRICULTURAL MACHINERY**



**INDUSTRIAL MECHANICS**



**ALIMENTARY**



**WATER AND OIL PUMPS**



# PRODUCTION DEPARTMENT



We constantly improve the performance thanks to a **regularly renewed fleet of machines** and the potential of **Industry 4.0**.

All the machines are connected in Wi-fi to a **MES software**, in order to monitor production in real time with a continuous exchange of data. Through the analysis of reports, we detect any inefficiencies and at the same time we optimize times and methods.



# MACHINE PARK EQUIPPED WITH AUTOMATIC BAR LOADER



Motorized CNC lathes max turnable 80 mm	Bar diameter
1 Biglia B480YS	80 mm
1 Biglia B501YS	80 mm
2 Nakamura WT150	65 mm
1 Biglia B470YS	65 mm
1 Nakamura Super NTY3	45 mm
2 Biglia B545YS	45 mm
4 Biglia B111 e B301SM	42 mm
1 Biglia B438YS	38 mm

Motorized CNC lathes with mobile headstock max turnable 32 mm	Bar diameter
1 Tornos DECO 26	32 mm
1 Hanwha Hanex ML26S	32 mm
1 Tsugami BW208E con 8 assi lineari	26 mm
1 Tsugami BW209ZE con 9 assi lineari	26 mm
4 Tornos DECO 20	25 mm
1 Tornos DECO 10	10 mm

Multi-spindle mechanical lathes max turnable 38 mm	Bar diameter
2 Mori-Say	38 mm
2 Gildemeister mod. GM 20	25 mm
1 Mori-Say	20 mm

Multi-spindle CNC lathes max turnable 24 mm	Bar diameter
1 Tornos MULTIDECO 20/6	24 mm

CNC VERTICAL MACHINING CENTRES and SHOOTING LATHES (ORGANIZED AS A FLEXIBLE ISLAND)
1 Brother machining centers working range up to 360x270x700 mm and continuous revolving table
2 Stama machining centers working range up to Y450 X700 Z350 mm
2 Biglia shooting lathes working range up to 365mm in diameter and 500mm in length

# PROCESSED RAW MATERIAL



## FREE CUTTING STEEL NOT DESTINED FOR HEAT TREATMENT

- 11SMn30            11SMn30
- 11SMnPb30        11SMnPb30
- AVZ                11SMn37
- AVP - PS113        11SMnPb37
- AVP Telby            11SMnPb30+Te+Bi
- AVP Telby Plus     11SMnPb37+Te+Bi
- FE37                S235JRG2C
- FE52                S355J2G3C

## MARTENSITIC STAINLESS STEEL

- 430F                X14CrMoS17

## FREE CUTTING STEEL FOR TEMPERING

- PR80                36SMnPb14
- C40                 C45E
- 39NiCrMo3 Pb     39NiCrMo3 Pb
- 100Cr6             100Cr6

## AUSTENITIC STAINLESS STEEL

- 303 PLUS            X8CrNiS18-9
- 304L                X2CrNi18-9
- 316L                X2CrNiMo17-12

## FREE CUTTING STEEL FOR CEMENTATION

- RN2PB              16NiCrS4 Pb
- 20MNCRS5         20MnCrS5
- RC2                 18NiCrMo5

## BRASS

- Ottone CW614N     CuZn39Pb3
- Ottone CW617N     CuZn40Pb2

## ALUMINIUM

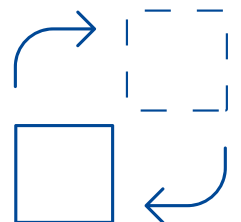
- 2011                AlCuBiPb
- 6026                AlMgSiBi
- ERGAL 7075        AlZn5,5MgCu

# SURFACE TREATMENTS



**In addition to turning, complementary treatments are carried out, through a network of qualified partners**

- Tumbler and static zinc plating
- Heat treatment
- Normal and hard anodizing
- Chrome plating
- Galvanic and chemical nickel plating
- Vibratory finishing
- Sandblasting
- Many other treatments on request



# ADDITIONAL SERVICES



---

## 100% selection

At the customer's request and if agreed, OMT BONETTO guarantees the 100% item selection service, which is performed with latest generation automatic machinery. In this case, the company makes use of qualified external partners, or carries out the service internally, if the customer requests only one visual selection. This is an essential phase of the production process because it allows us to guarantee 100% safe and selected components and mechanical parts.

## Assembly

A part of OMT BONETTO production is dedicated to the outsourcing assembly of mechanical assemblies. For this activity we only use well-established companies in the area that allow us to guarantee a high quality standard, managing ordinary and extraordinary flows. Qualified personnel will be able to manage even the most complex assemblies based on our indications.

## Logistics

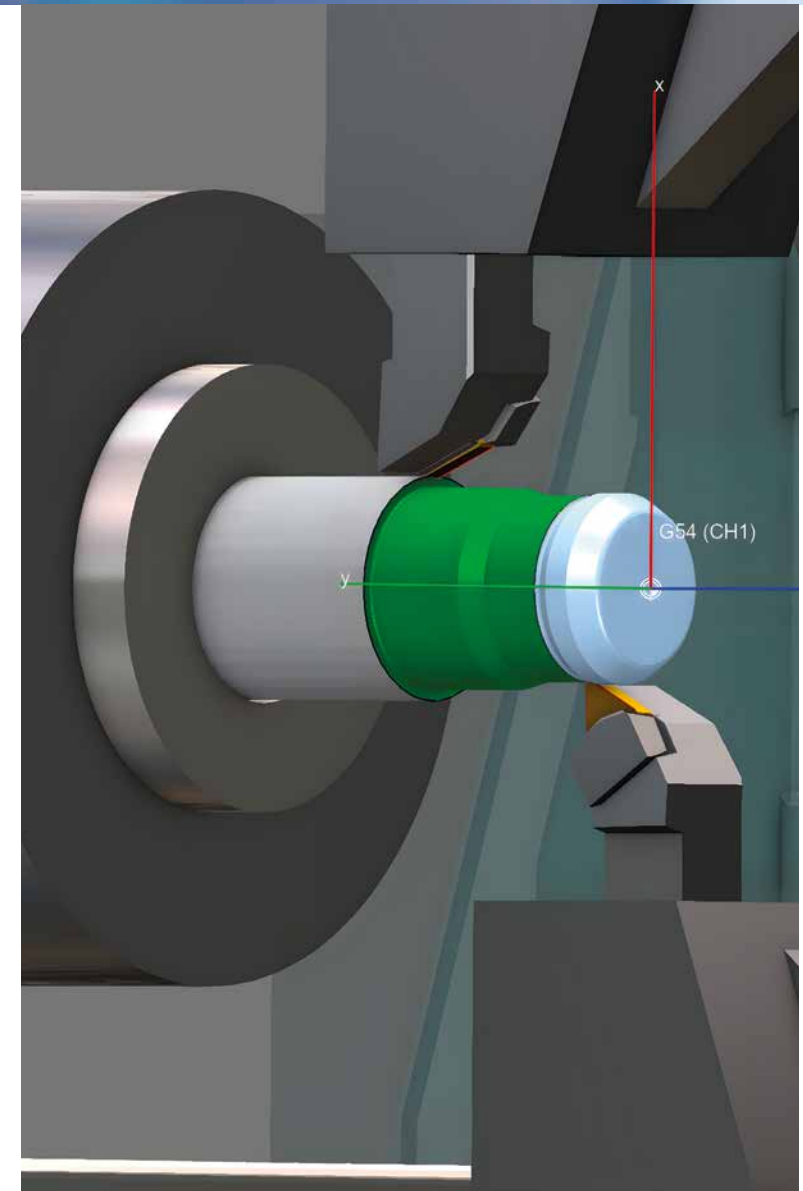
For all products, handling methods are defined which guarantee the integrity and traceability of each individual product. A widespread and efficient logistics network, which allows the customer to be reached in the shortest possible time. Competence and professionalism are an integral part of OMT BONETTO's corporate policy: this allows the company to offer an extended service throughout the country.

# SPECIALIZED TECHNICAL OFFICE



Even before being a manufacturer of metal parts, OMT BONETTO is a capable partner, able to support the customer in any **co-design** need for the mass production of mechanical components. The inclusion of each new article in OMT provides for the historicization of all the information concerning it. In addition to the drawings, the company software duly reports the technical requirements requested by the customer, the Quality control plans, as well as all the instructions relating to the working and handling methods. OMT's goal is to make the process safe and stable, eliminating all those variables that can undermine the compliance of the article, with the aim of offering quality of excellence.

Through appropriate **simulation systems (Roboris/ Eureka)**, we optimize the workings and reduce the times piece.

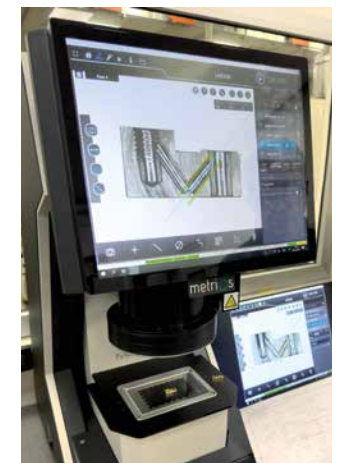
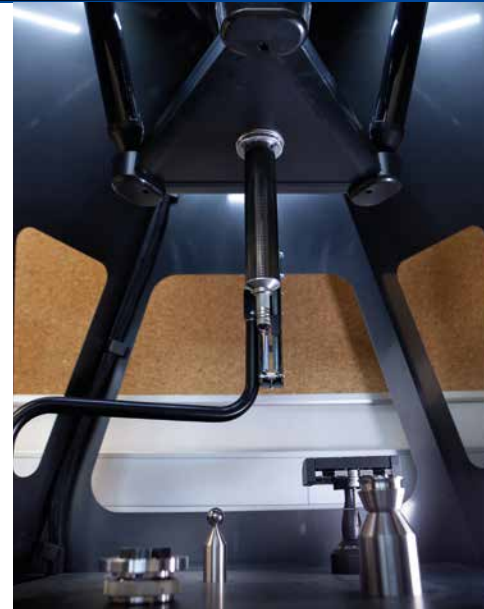


# QUALITY CHECK



The quality of the various production sectors of OMT BONETTO is guaranteed by the use of **advanced software and quality check**, which allow extremely careful and precise checks and reliefs. The instrumentations includes:

- 1 CMM ottica VICIVISION - MTL500EVO
- 1 CMM ABERLINK SPIDER
- 1 MM3.01 METRIOS PIANA FISSA (100 mm vertical stroke; work range 95x65 mm)
- 1 CMM DEA Mistral 3D
- 2 projectors Microtecnica (one Orion 400H and one Helios 350H);
- 2 roughness testers Taylor-Hobson Form Talysurf 50i



# CERTIFICATION

We are certified ISO 9001:2015 since 1999.

We also work according with the requirements of the IA/TF 16949 standard and we can therefore provide on request:

- raw material certificates
- surface treatment certificates
- first sampling complete with PPAP
- FMEA
- 8D report

**bsi.**



## Certificate of Registration

QUALITY MANAGEMENT SYSTEM - ISO 9001:2015

This is to certify that:

OMT Bonetto Srl  
Via Fornace Ia Strada, 5  
Arsego di S. Giorgio delle Pertiche (PD)  
35010  
Italy

Holds Certificate No:

**FM 594480**

and operates a Quality Management System which complies with the requirements of ISO 9001:2015 for the following scope:

Precision machining according to customer's design.  
Activities are related to IAF Sector 17.

For and on behalf of BSI:

  
Javier Castells, Branch Manager Italy & Spain

Original Registration Date: 2013-04-02

Latest Revision Date: 2022-03-16

Effective Date: 2022-04-02

Expiry Date: 2025-04-01

Page: 1 of 1



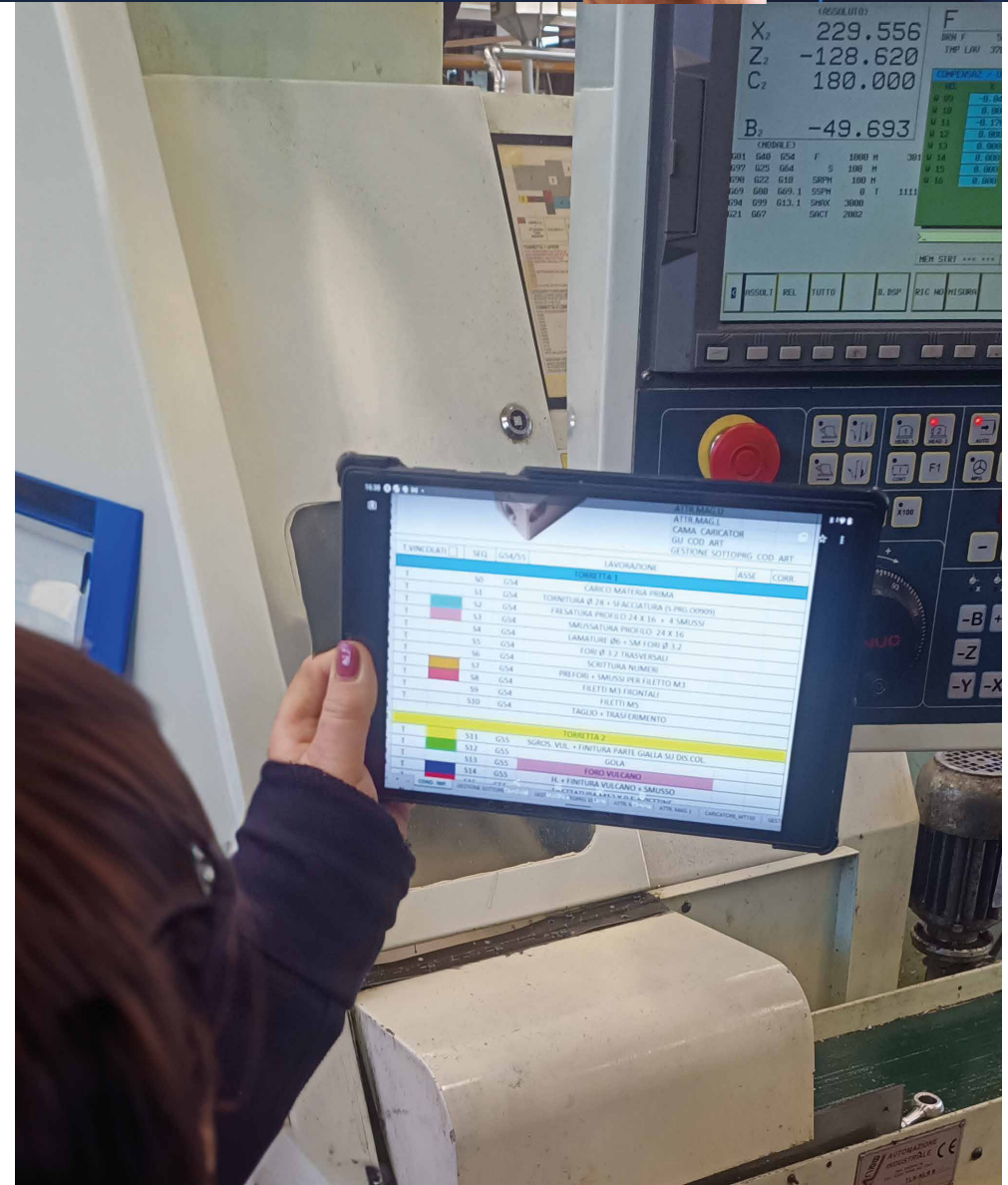
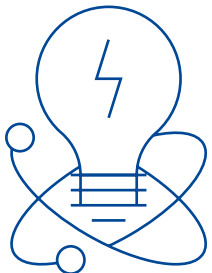
...making excellence a habit.™

# DIGITAL TRANSFORMATION



We work every day to make transversal and agile the **use of information**, through the connection between places, people and tools.

OMT departments are designed to meet the needs of employees and customers and **equipped with the best technologies** to optimize times and processes.

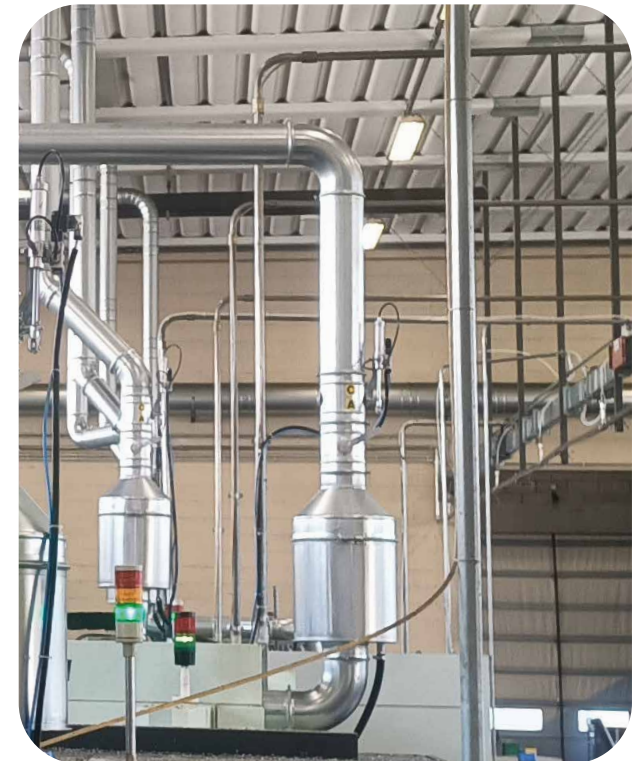
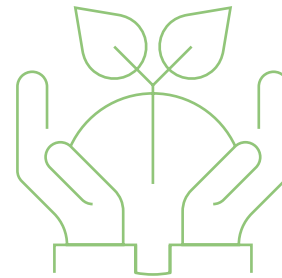


# SUSTAINABILITY

We are constantly committed to reducing consumption. The company is in fact equipped since 2011 with a **photovoltaic system**, with rated power of 90 kWp for the self production of energy. Furthermore, we modulate the energy requirement according to the actual absorption, thanks to a new **intake manifold with automatic open and close valve system**.

The **compressors** are also equipped with **programmed automatic power off**, for a net savings.

In all the interventions we found a reduction in consumption for more than 40.000 kW/year and a containment of emissions into the atmosphere corresponding to a few tons of CO2 per year.





## **OMT BONETTO SRL**

**Precision mechanics**

Via Fornace I Strada, 5

35010 Arsego di S. Giorgio Delle Pertiche (PD) - Italy

**[info@omttech.com](mailto:info@omttech.com) - [lisa.bonetto@omttech.com](mailto:lisa.bonetto@omttech.com)**

**[omttech.com](http://omttech.com) | +39 049 574 2809**